



**Airworthiness Directive: 105**

**Date: 6/22/93**

**Subject: *Bellcrank gusset***

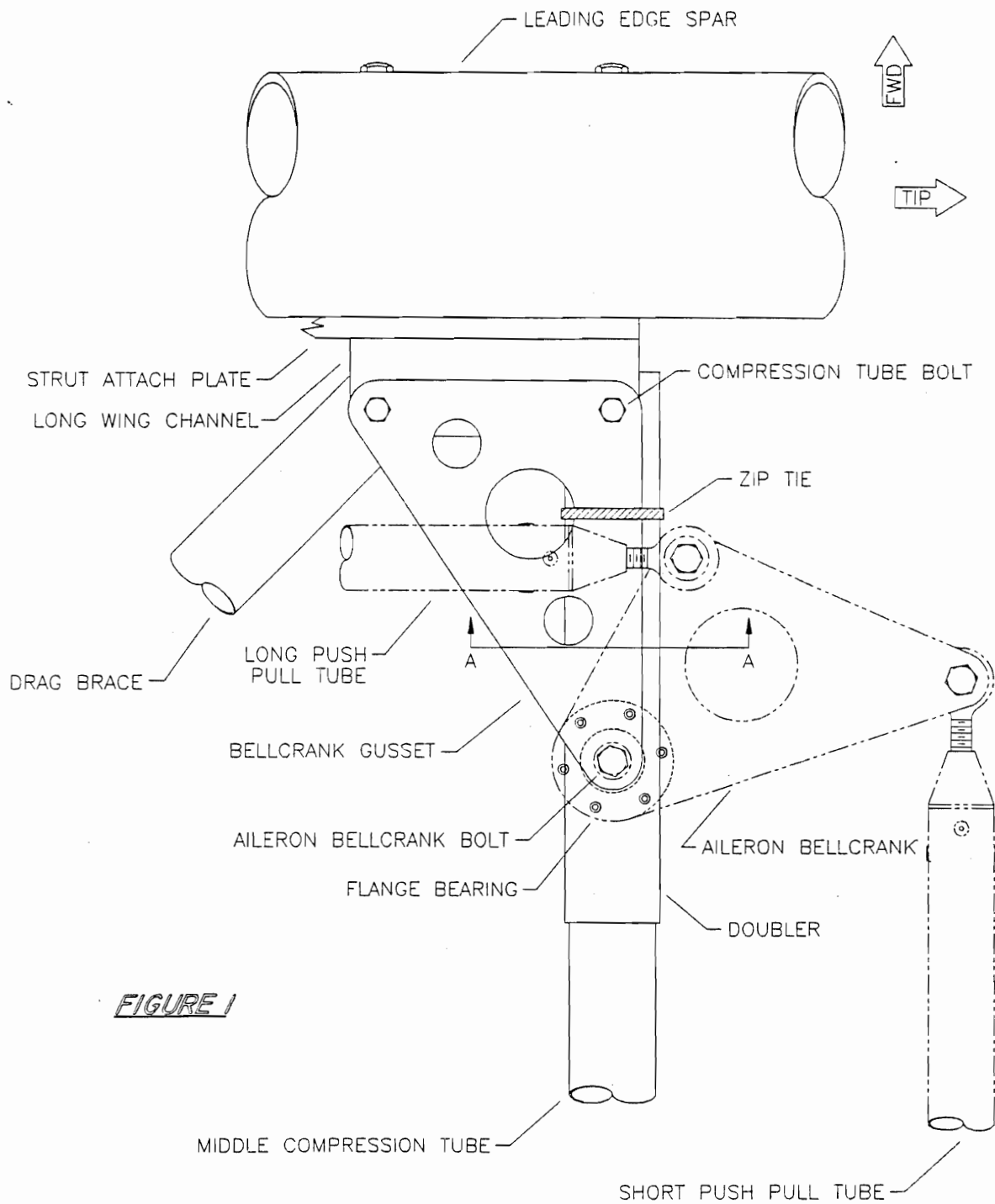
**Compliance: *Mandatory***

**Models Effected: *S-6ES, S-12, S-14 shipped after 6/20/92***

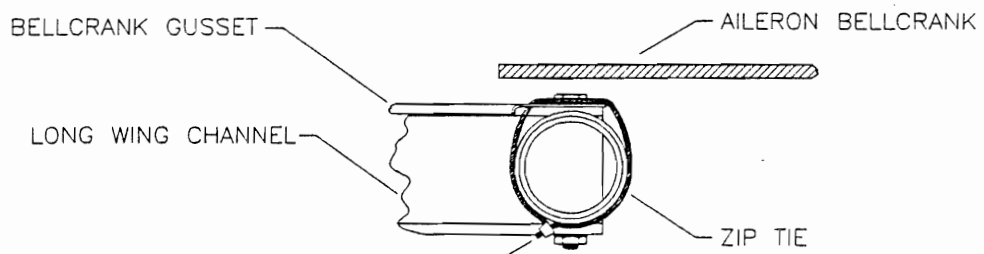
Improper assembly of the bellcrank gusset (CS-BELGU-LH/RH) may result in jamming the aileron. The gusset will have a tendency to bow upward if forced to fit between the compression tube and aileron bellcrank bolt. Proper assembly has the 1/4" hole drilled into the gusset by transfer once in place. To assure against aileron jam by gusset interfering, a plastic zip tie can be installed as per figure 1. and prescribed procedure below.

The procedure to install the zip-tie:

1. Unzip the inspection port closest to the aileron bellcrank and inspect the gusset.
2. Detach the aileron push pull tube from both ends.  
(HINT: count the number of turns when detaching the push pull tube so that you don't have to rig the aileron again when reinstalling.)
3. Get one mid size zip tie.
4. Pass your hands through the aileron push pull tube opening and the inspection port.
5. Pass the tie wrap around the compression tube through the hole over the bellcrank gusset, BUT UNDER the bellcrank (see figure1.)
6. Secure the tie wrap in place and cut the access so that it will not interfere with the aileron operation. Make sure that the tie wrap locking mechanism is pointing down.
7. Reinstall the aileron push-pull tube
8. Verify that the aileron moves freely with no restrictions.
9. Zip close the inspection port.



**FIGURE 1**



NOTE: POSITION OF NYLON TIE WRAP LOCKING MECHANISM ON LOWER SIDE OF TUBE

**VIEW A-A**