

Outbound Progress Report 24

Typical Factory Build Times of S-21 Airframe Components

Wings	50
Flaps and Ailerons	8
Elevator	7
Trim Tab	3
Horizontal Stabilizer	8
Vertical Stabilizer	4.5
Rudder	1.5
Tailcone	20
Mating Tailcone to Cage	2
Cage Skin	8
Boot Cowling	8
Doors	12
Seat Assembly	8
Baggage Compartment	10
Rudder Pedals/Floorboard	4
Windshield Install	8
Total	162

A first time builder may expect these times to double, or more. Build times can vary greatly due to experience, shop set up, and personnel standards. Our goal was to create a kit that you can have ramp ready, minus paint, in 500 hours. From what we are seeing in our factory builds, this is looking realistic. As for the average builder, time will only tell.

Titan Powered Outbound

We are on course for the first Titan powered Outbound to take flight this month. We will post performance results as we progress through the flight test program. Our second Titan powered Outbound, our new demo plane, is also nearing completion and we will keep you posted.

Price Increase

We have held off as long as we can, and we will be making an increase to the price of the S-21 kits and ready-to-fly offerings. Please consult the on-line pricing. The new prices are in effect but do not impact any orders in process.

S-21 Build Workshops

We are now offering S-21 Rudder Build Workshops. These will include hands-on rudder building in the morning session and the afternoon will be spent on an advanced assembly seminar and demos. Enrollment for the rudder workshop is limited to five individuals or teams. There is no limit on those wanting to monitor the

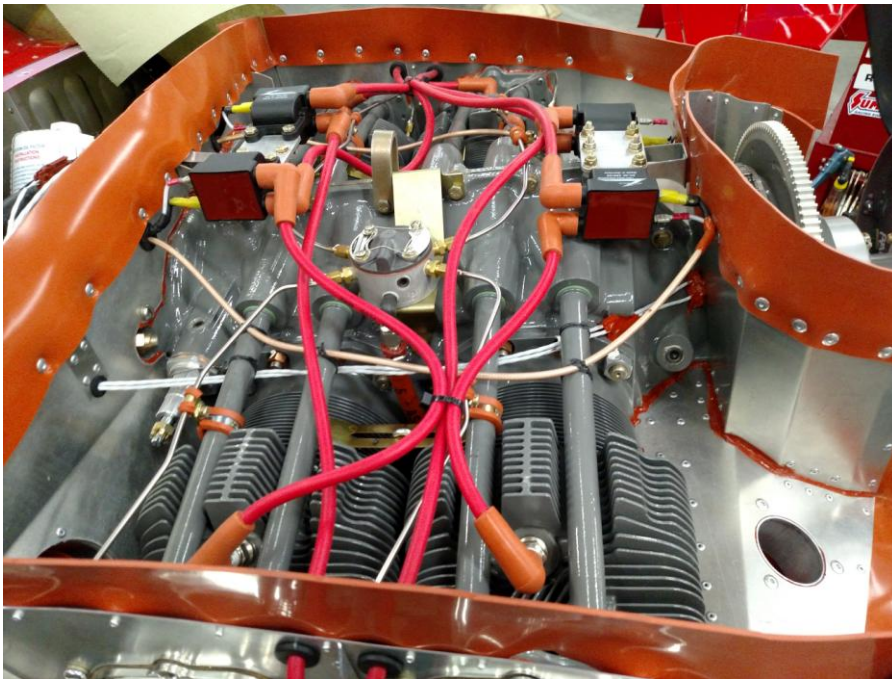
workshop and advanced assembly seminar. The cost to attend is \$595 for the rudder build workshop and seminar. You will be required to take your completed Rudder home with you or pay for shipping to your address after the rudder workshop. To monitor the workshop and/or the seminar the cost is \$100. Times: Rudder Workshop 8am-12pm Advanced Seminar/Demos 1pm-4pm CST

March 15th

June 14th

September 13th

January 17th, 2020

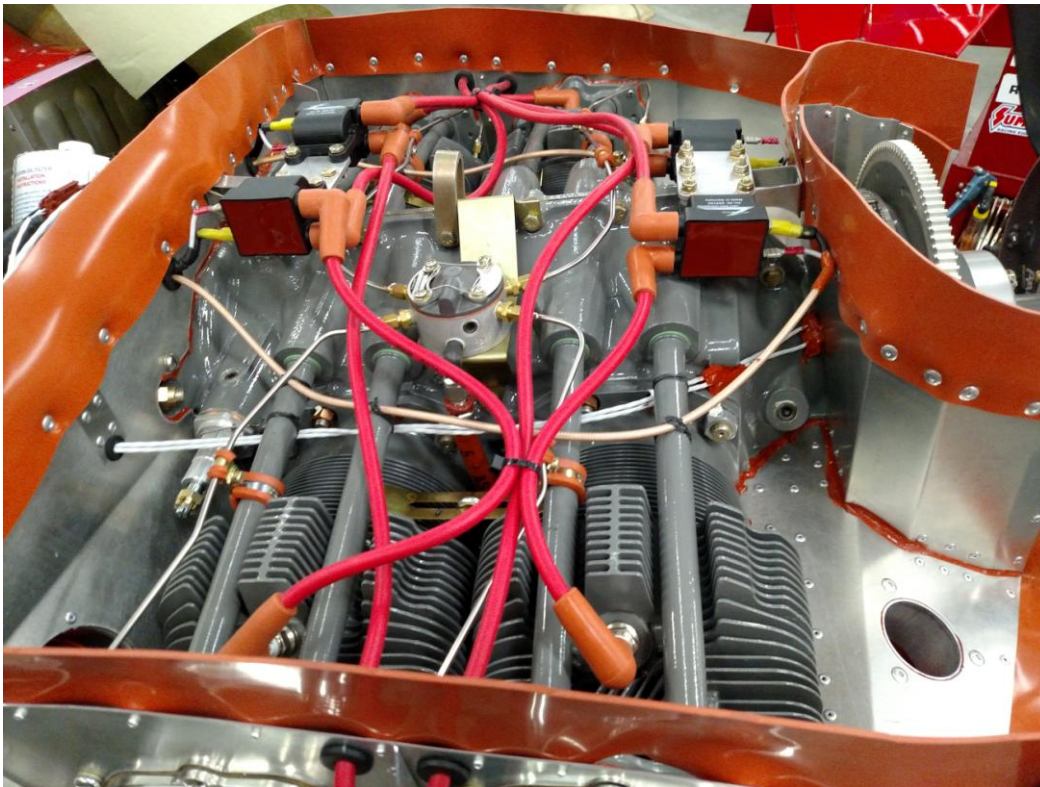


Conventional baffling is part of the engine install kit. It includes pre-cut baffles and silicon strips for the seal to the cowling.

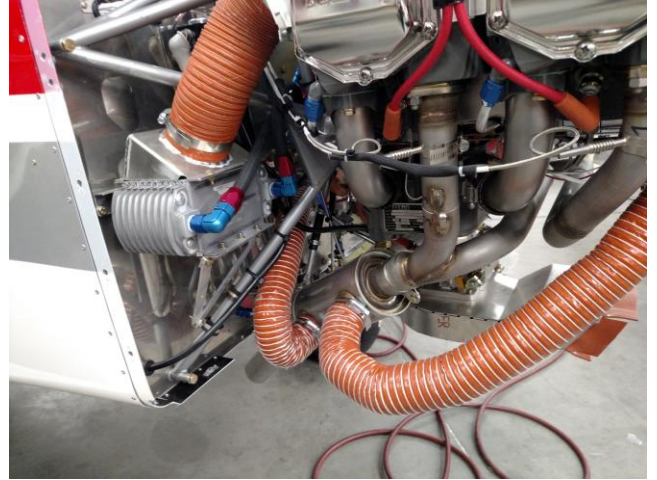
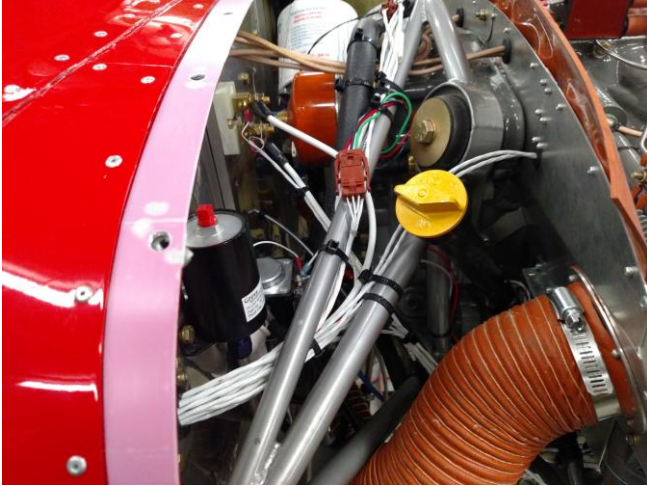
Your panel can be done in a custom color as an option, or it will be the same silver as the cage. This panel features the Garmin G3X, Garmin GTN625, and dual radios.



We offer a kit to mount the AP servos for correct and fast assembly.



Firewall clearance is tight, but you can install P-mags. The airbox features alternate air. Oil cooler is firewall mounted.



This is one of the prototype handles we are testing. Most likely it will end up long enough to extend out of the vertical fin so there is a handle on both sides.



Thanks for stopping by, more to come soon! RJS