

# RAMS

4600 Highway 183 Alternate  
Hays, KS 67601  
(785) 625-6346  
Fax (785) 625-2795

***Airworthiness Directive: 121***

***Date: January 22, 2001***

***Subject: Control Stick Stop Ring***

***Compliance: Mandatory***

***Models Effected: S-7 Courier***

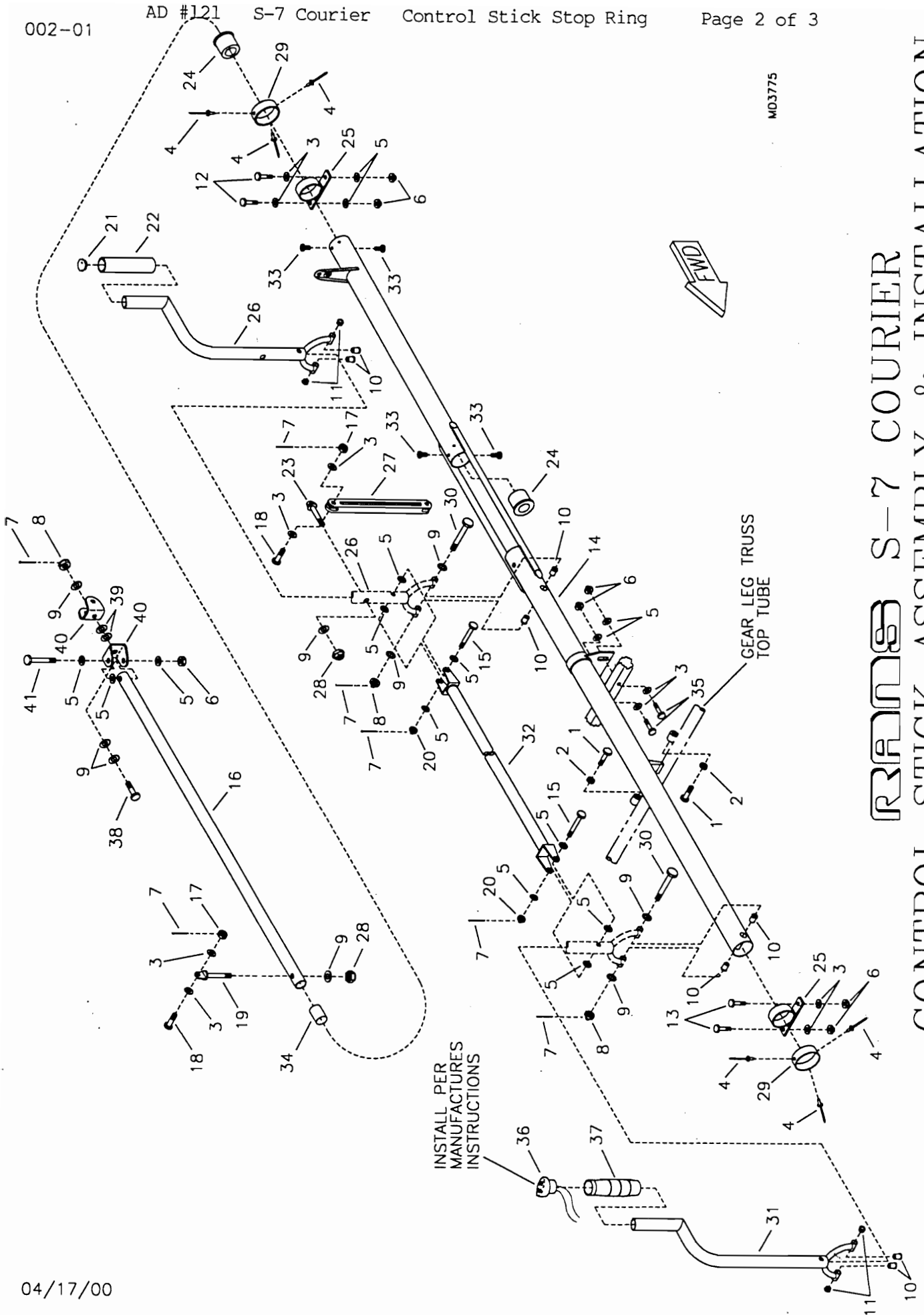
Please install the stop ring (rivets and ring included) to the aft side of the aft pillow block.

Place revised assembly pages in your manual.

<u>Description</u>	<u>Part Number</u>	<u>Qty</u>
1/8" Stainless Steel Pop Rivet – Cherry Q	CCPQ-42	3
Pillow Block Stop Ring	KPCS0013	1

Thank you for your attention to this matter. Hopefully we have not inconvenienced you to any great degree. Fly safe!

MD3775



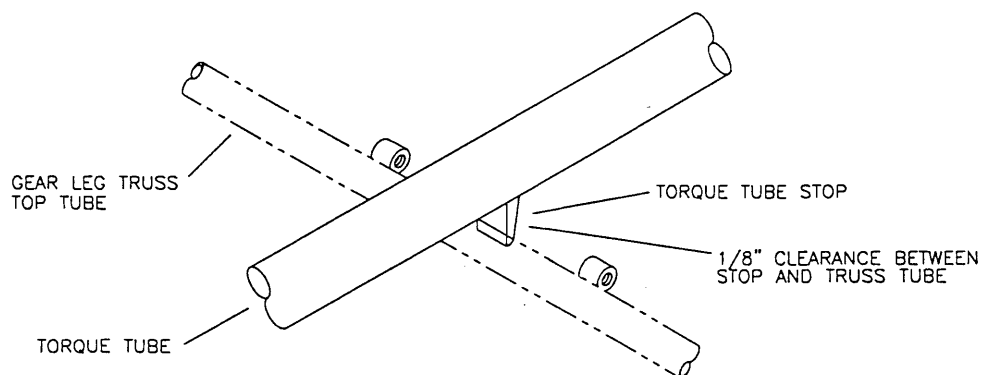
# RAMS S-7 COURIER CONTROL STICK ASSEMBLY & INSTALLATION

**S-7 CONTROL STICK ASSEMBLY**  
(REFER TO PARTS PAGE 002-02 FOR PARTS SELECTION)

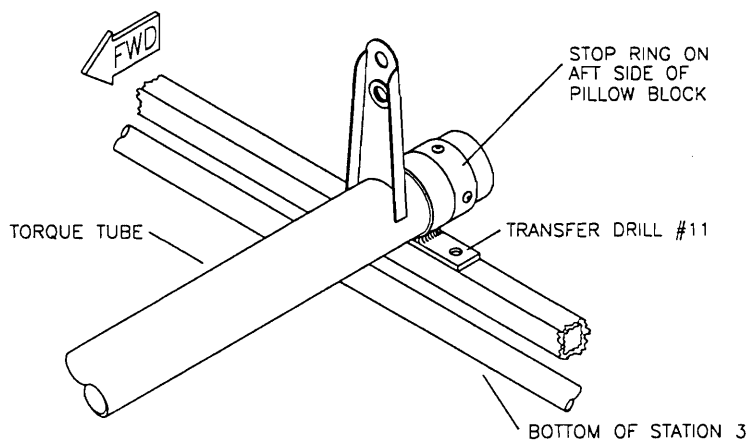
**NOTE:** The torque tube must be trial fitted and pillow blocks positioned prior to painting it.

1. Install the torque tube stop bolts and jam nuts to the bosses welded to the aft side of the gear leg truss top tube; refer to the parts drawing. Slide a torque tube pillow block and the pillow block stop ring onto the forward end of the control stick torque tube; refer to the parts drawing for torque tube orientation. Install the torque tube to the fuselage by bolting the forward pillow block to the two tabs welded at station 2. Position the middle pillow block against the aft side of the square tube just below the forward seat frame at station 2A. Slide the aft pillow block on the torque tube and position so the pillow block strap is centered on the square mounting tube at station 3. Transfer-drill through the pillow block strap and mounting tube; bolt in place. See **FIGURE 02-01A**. Check the torque tube for alignment and freedom of movement. **IMPORTANT: Incorrect alignment will cause the torque tube to bind.** Using the pillow block as a guide, transfer-drill through the tube and bolt in place, per the parts drawing. Adjust the fore/aft position of the torque tube so the torque tube stop is centered between the stop bolts; see **FIGURE 02-01**. Slide fwd and aft stops in place, tight against the fwd and aft pillow blocks. Locate and rivet, 3 rivets in each stop ring; refer to the parts drawing. The torque tube should rotate freely with no end play. Take your time at this step. Alignment and free movement of the control stick assembly is very important. Friction in your control system will have negative influence of the flying qualities of your aircraft. Remove the torque tube for painting. Install after the fuselage is covered and painted.

**FIGURE 02-01**



**FIGURE 02-01A**



MD2747