



Airworthiness Directive: #113

Date: September 27, 1996

Subject: 2-3 Longeron/Main Gear Brace Attach Point

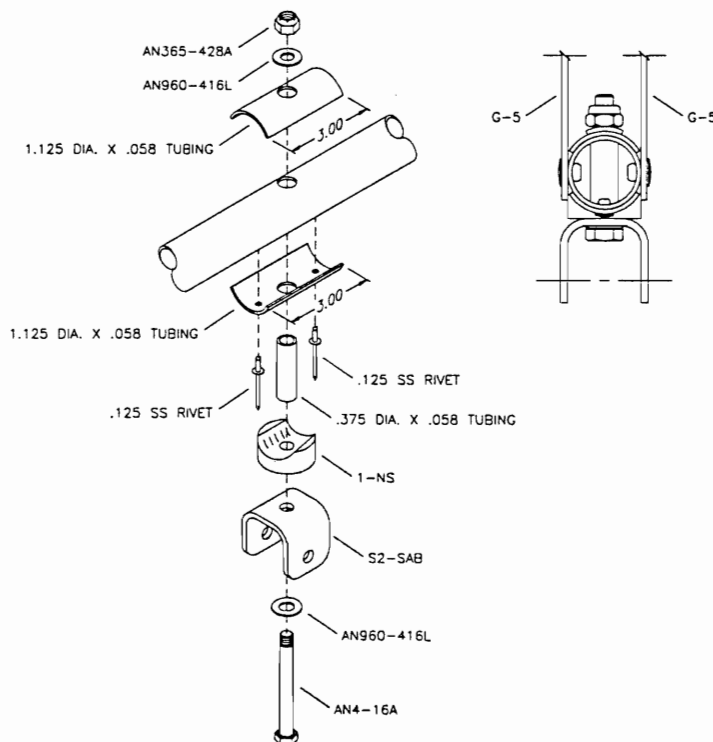
Compliance: Mandatory before next flight

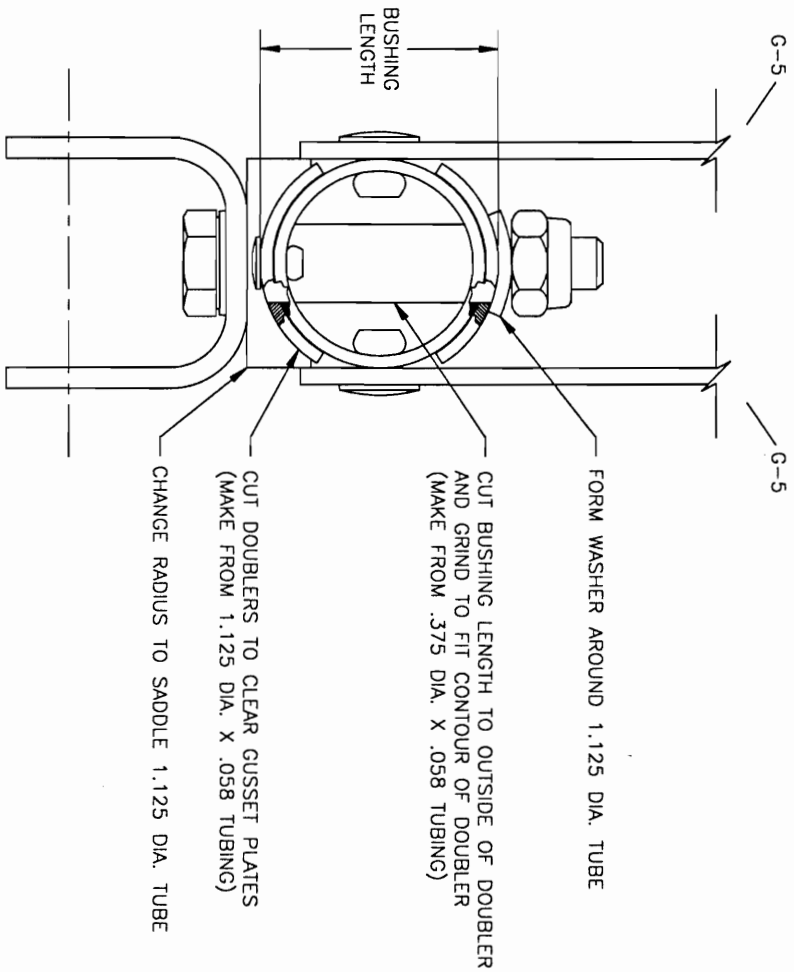
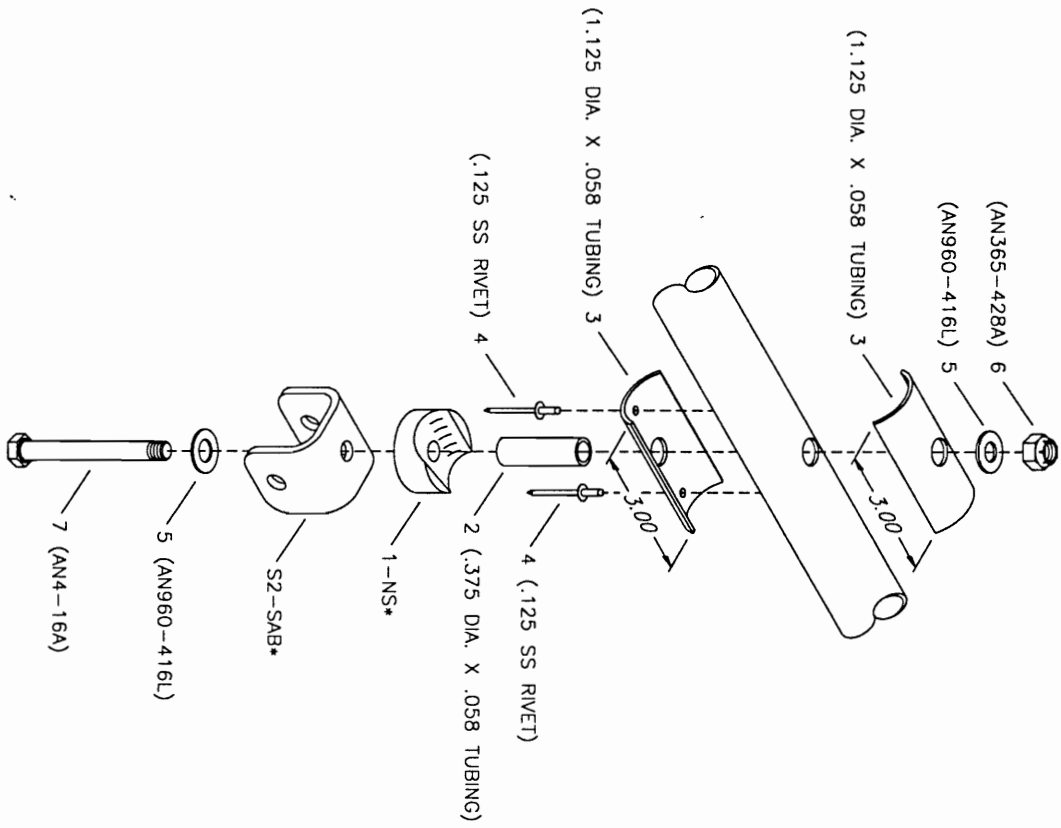
Model Effected: S-4 Coyote I (Taildraggers)

Cost: \$10.00

The attachment point between the main gear brace and longeron (part # 2-3) connecting stations 2 and 3 on the S-4 is designed with an internal doubler. On some aircraft this doubler is missing. Without this doubler installed, the main gear brace attachment bolt could pull through the longeron. To correct this problem, one must first determine if the doubler in question is missing. Do so by supporting the aircraft by the struts where they attach to the wing. Hint: Two sturdy step ladders can be used. Remove the bolt retaining the aft gear brace to the longeron and inspect for the doubler. If the doubler is missing, please follow the recommended fix per the illustration below.

Note: The parts in the illustration can be ordered from the parts department. Ask for kit No: AD#113.





NO.	DESCRIPTION	MATERIAL/PART	QTY.
1	ILLUSTRATION	MD2531	1
2	BUSHING	.375 DIA. X .058 X 1.13	2
3	DOUBLER	1.125 DIA. X .058 X 3.00	2
4	SS RIVET	CCPQ-42	4
5	WASHER	AN960-416L	4
6	NUT	AN365-428A	2
7	BOLT	AN4-16A	2

* EXISTING PART

MD2531