



**4600 Highway 183 Alternate  
Hays, KS 67601  
(785) 625-6346  
Fax (785) 625-2795  
www.rans.com**

**Operation Alert #: 196 Rev A**

**ISSUE DATE: March 27, 2025 – Rev A**

**Compliance: Mandatory**

**MODEL AFFECTED: S-20 & S-21 equipped w/ Whirlwind GA-200 series prop**

**Subject:**

It has been reported on multiple occasions that the older style hub of the Whirlwind GA-200L – 616 - 2B has cracked at the root end of the hub. This particularly occurs next to the blade retention bolts. It has also been reported multiple times of bolts shearing. At this time, we are not aware of the newer style hubs having any cracks. The newer style hub has proper clearance between the hub halves when torqued and has larger 7/16" bolts for the prop retention bolts.

**Compliance:**

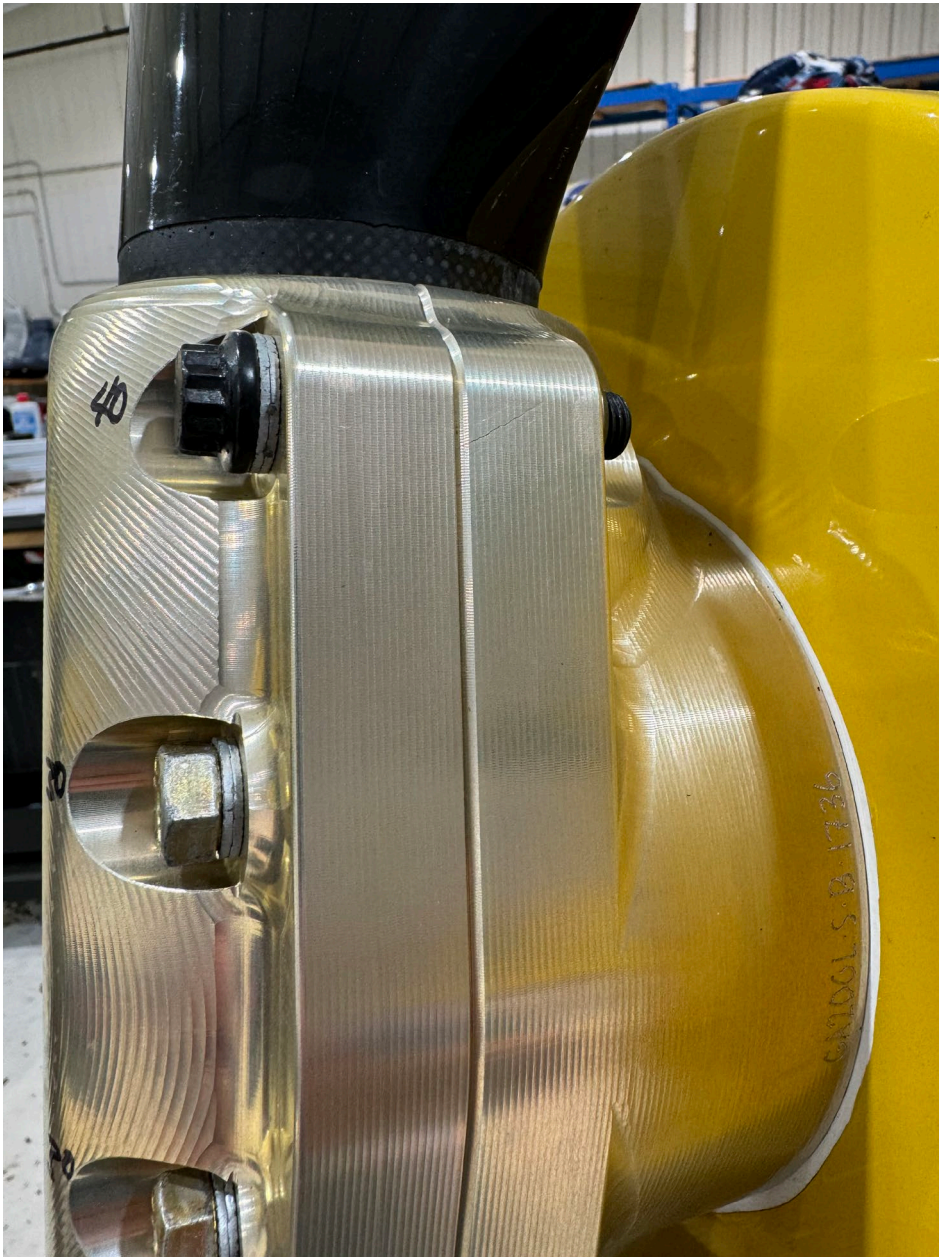
An Inspection of the propeller hub should be completed before your next flight. Inspection of the bolt torques should be completed also before your next flight. This shall include the bolt torque of the two inner bolts that hold the hub to the prop spacer. There can be a crack that is hard to see, if there is a suspected crack, dye penetrant can be used to confirm a hairline crack. If any cracks are found, please contact Hartzell and RANS Designs Inc. and do not fly your airplane until the hub is replaced. If any sheared bolts are found, please contact Hartzell for replacements as well.

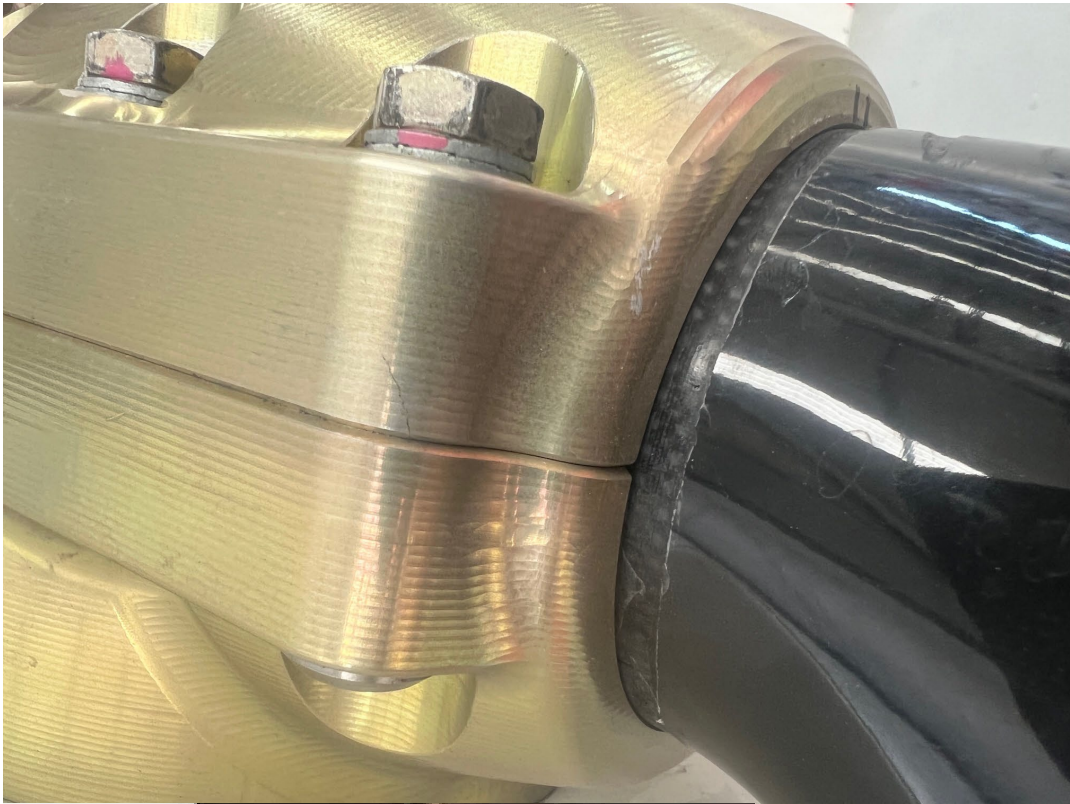
**Notes:**

It is highly recommended to dynamically balance your prop to your engine. While the prop is statically balanced from the manufacturer, it should be dynamically balanced to the engine. Always follow the inspection intervals found in the Whirlwind installation manual, this includes torque intervals. (Page iv of iv, rev 11) DO NOT PAINT THE SPINNER BACKING PLATE, as per the Whirlwind installation manual. (Page 8 of 18, rev 11). RANS Designs paints the FWD side of the backing plate, but not where the prop hub mounts.

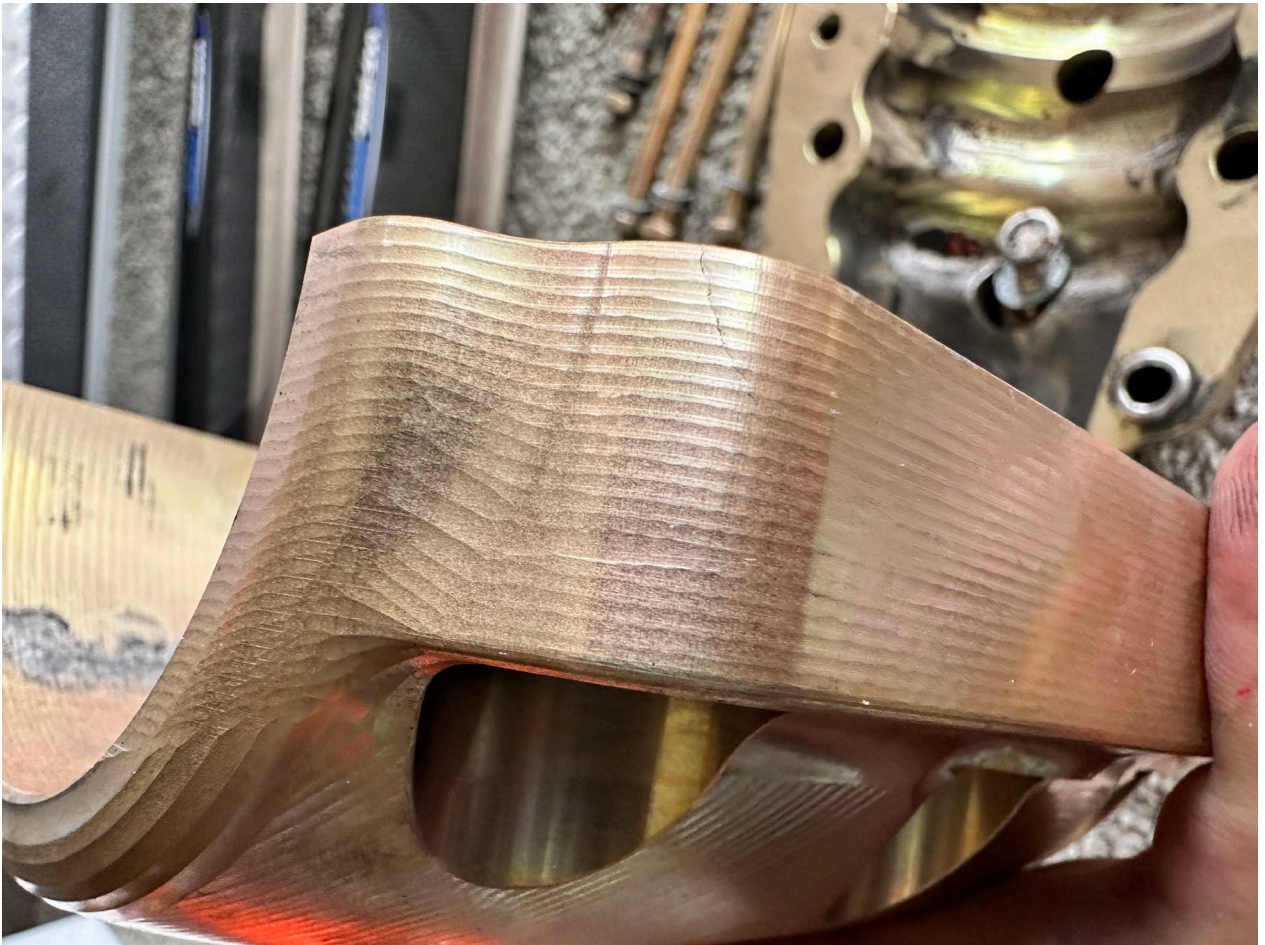
[Whirlwind Installation Manual - Click Here](#)

This images below depict a few different hub cracks found upon propeller inspections:









Thank you for your attention to this matter.  
As always, Fly safe!!

**RANS**  
AIRCRAFT