

AIRWORTHINESS DIRECTIVE: 060992-01 (100) (page 1 of 3)

DATE: 06-09-92

SUBJECT: S-12 U-BRACKET SU-218

COMPLIANCE: MANDATORY

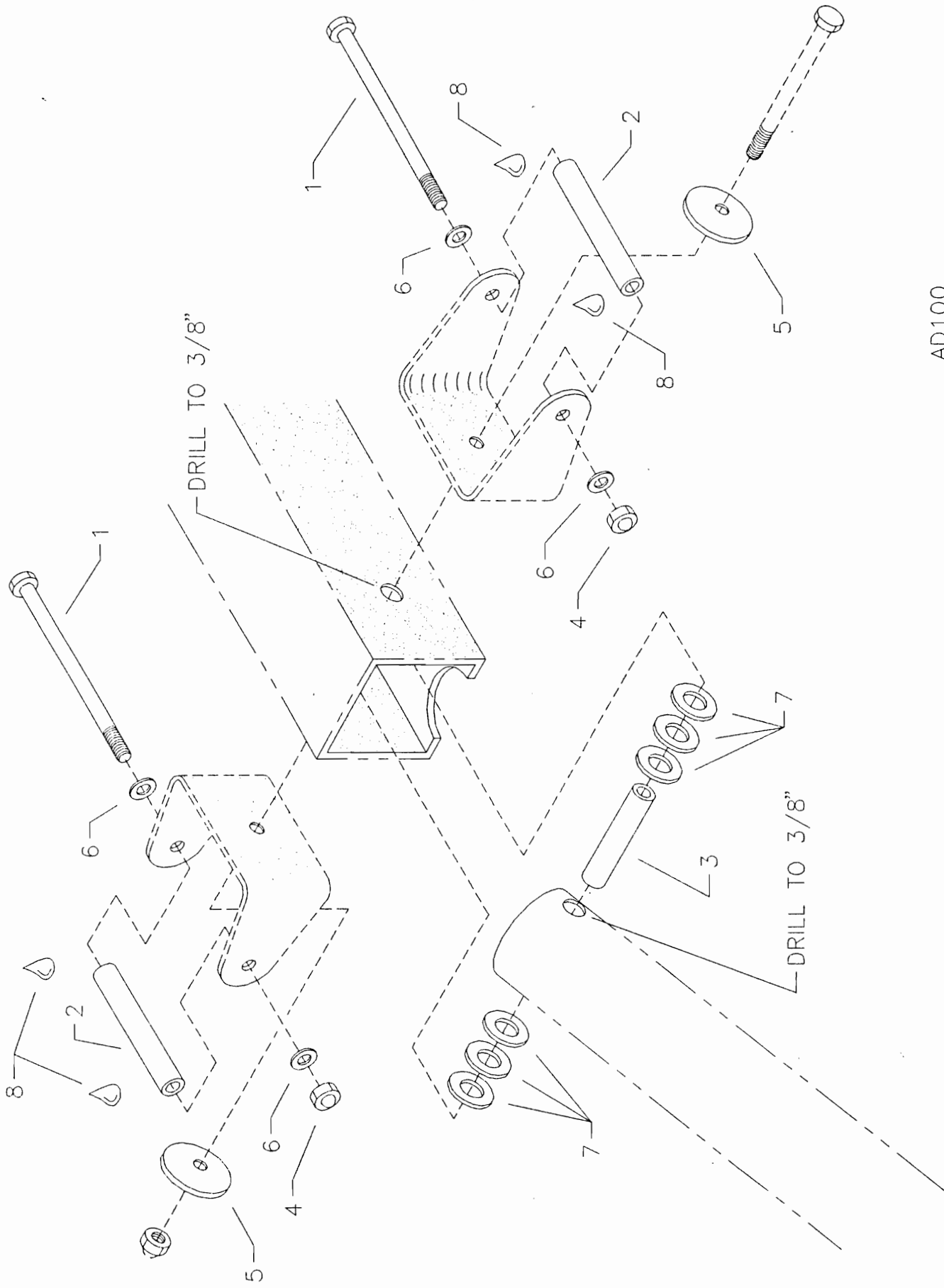
COST: TIME TO INSTALL

MODELS EFFECTED: S-12 AIRAILE

Static load testing has revealed that deformation will occur in the leading edge U brackets. This deformation could occur if over 1.5 negative Gs have been applied at a Gross weight of 1010 Lbs. This is possible but unlikely in actual flight. A simple bushing and bolt fix kit is being supplied to eliminate the potential for deformation. Please install this kit before your next Airraile flight. Thank you for your attention to this matter.

SUPERSTRUCTURE REINFORCEMENT

1. Remove the leading edge spar clevis pins and fold both wings away from the keel tube.
2. Remove the 1/4" bolt retaining the (2) U-Brackets and forward strut. Remove the 1/4" washers used as spacers for the forward strut inside the keel tube. Drill out the 1/4" hole in the top of the forward strut and keel to 3/8". Insert the 3/8 x 2" bushing into the strut. Install three washers per side as shown in the drawing.
3. Reassemble the U-Brackets using the EG-AW aluminum washers on the inside of the U-brackets under the head of the AN4-26A bolt and nut. Torque to 10 foot pounds.
4. Fit the 2 1/8" bushings into the U brackets use J&B Weld Epoxy to fasten the bushing to the bracket, using a nut and bolt to hold the assembly together until the epoxy hardens. Do this for both left and right wing U-brackets.
5. Included in this kit are the AN4-33A bolts, 1/4" nuts and washers. These replace the 1/4" clevis bolts and lock rings currently in use on the S-12 Airraile. Use the nuts on the **Forward** holes in the spars.



AD100

AD #060992-01 (100)
(page 3 of 3)

S12 AIRRAIL (FIELD SUPERSTRUCTURE REINFORCEMENT)

#	PART NAME	PART NO.	QTY	PRICE
1.	1/4" Bolt	AN4-33A	2	.80
2.	U-Bracket Bushing	Bush 3/8x.058x2 1/8	2	1.00
3.	Forward Strut Bushing	Bush 3/8x.058x2	1	1.00
4.	1/4" Shear Nut	AN364-428A	2	.50
5.	Aluminum Washer	EG-AW	2	.85
6.	1/4" Washer	AN960-416A	4	.10
7.	3/8" Washer	AN960-716	6	.10
8.	J&B WELD Epoxy	J&B	*	----

* Builder Supplies J & B Epoxy.