



Large tail surfaces assure positive control at low speeds and great yaw and pitch stability. Electric pitch trim is standard.



Seats are high on comfort and low on weight. They also adjust fore & aft in flight and have 4 recline settings. Optional headrest shown.

RANS[®]

S-21 OUTBOUND

All metal, all purpose.



Ground Movement Handle

Cover: S-21 Outbound shown using the Titan x340 engine (180hp).





S-21 Outbound shown using the Titan x340 engine (180hp).

Above: Side-by-side seating allows for large interior volume without a high drag or visibility penalty. The generous cabin width is only at the occupant's shoulder, tapering gracefully to an efficient teardrop shape.

Right: With a low instrument panel height, a skylight, and big windows, exceptional visibility is achieved.



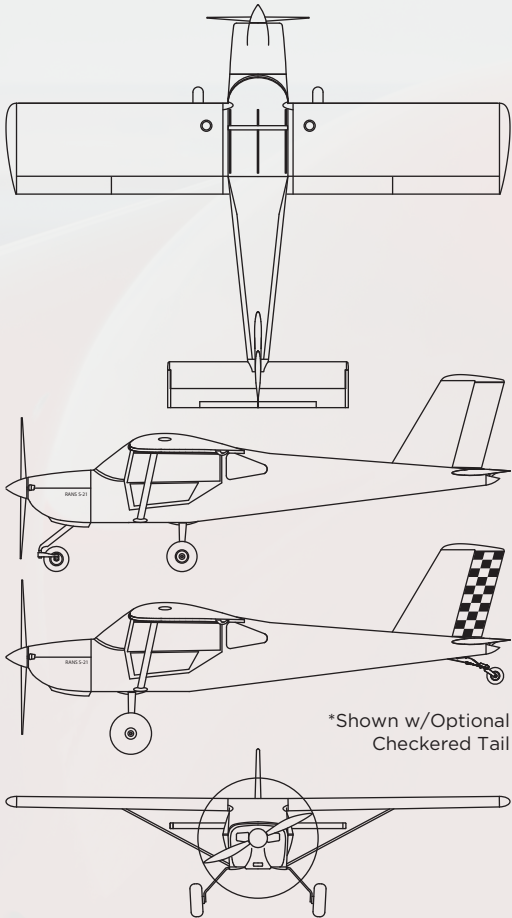
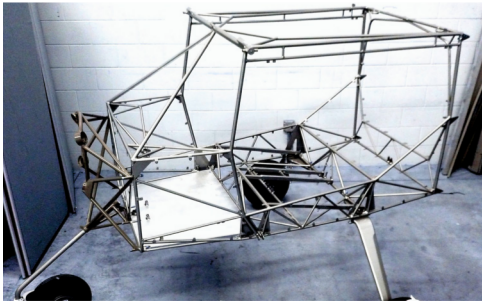
51" wide full lexan doors allow for enhanced visibility and ease of ingress-egress.



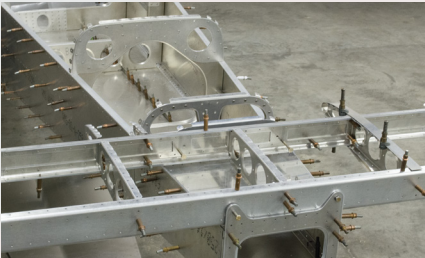
Up to 180 pounds can be carried in the Outbound's 24 cubic foot baggage compartment. Cargo net is standard.



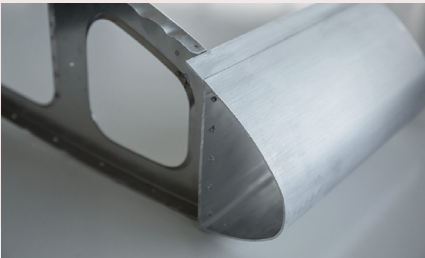
A welded steel cage comes powder coated as all steel parts, and provides fast assembly and crew safety.



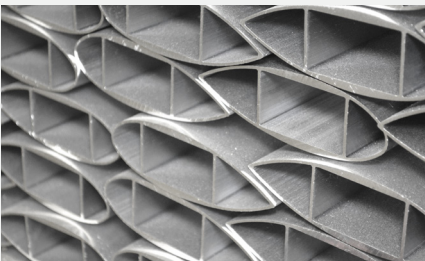
Convertible gear configuration comes standard on all S-21 Outbound airframes.



Typical Outbound construction uses CNC machining with final hole size. Most parts come de-burred and ready to cleco, check, and rivet.



Custom aluminum extruded spars make for fast assembly times.



Lift struts feature internal double webbing for extra strength.

SPECS AND PERFORMANCE

SPECIFICATIONS

Wing Span	28 ft.
Wing Area	141 sq. ft.
MAC	5.06 ft
Aspect	5.05
Length	22.41 ft.
Height Tailwheel	78"
Height Trike	102.65"
Cockpit Width	46.5 in.
Headroom	42 in.
Legroom	46 in.
Number of Seats	2
Doors	2
Landing Gear***	F/TDTK
Baggage Volume	24 cu. ft.
Baggage Capacity	180 lbs.
Fuel Capacity	50 gal. us.

POWER PLANT

	TITAN x-340
Output	180 hp
Oil Capacity	8 qt.
Coolant Capacity	n/a
Propeller Diameter	80 in.
Propeller Type	Gr. Adj.
Fuel G.P.H	8 @ 75%

WEIGHTS & LOADINGS

	TITAN x-340
Gross Weight	1320 lbs. (1800 lbs.*)
Empty Weight	985 lbs.
Useful Load	335 lbs. (815 lbs.*)
Wing Loading	13.47 lbs./ft ²
Power Loading	10.55 lbs./hp
Limit Loading	+6 /-2

PERFORMANCE

	TITAN x-340
Take Off Roll	325 ft.
Rate of Climb	1500 fpm
Service Ceiling	14,000 ft.
Vc	155 mph
Vne	215 mph
Stall Clean	50 mph
Stall Flaps	40 mph
Roll Rate	100°/sec
Glide Ratio	9.5:1
Landing Roll	375 ft.
Endurance**	5 hrs.
Range	750 miles

* EAB (Experimental/Amateur-Built)

** Plus .5 hr. reserve

*** F/TDTK= Fixed, Convertible/ Taildragger or Trike